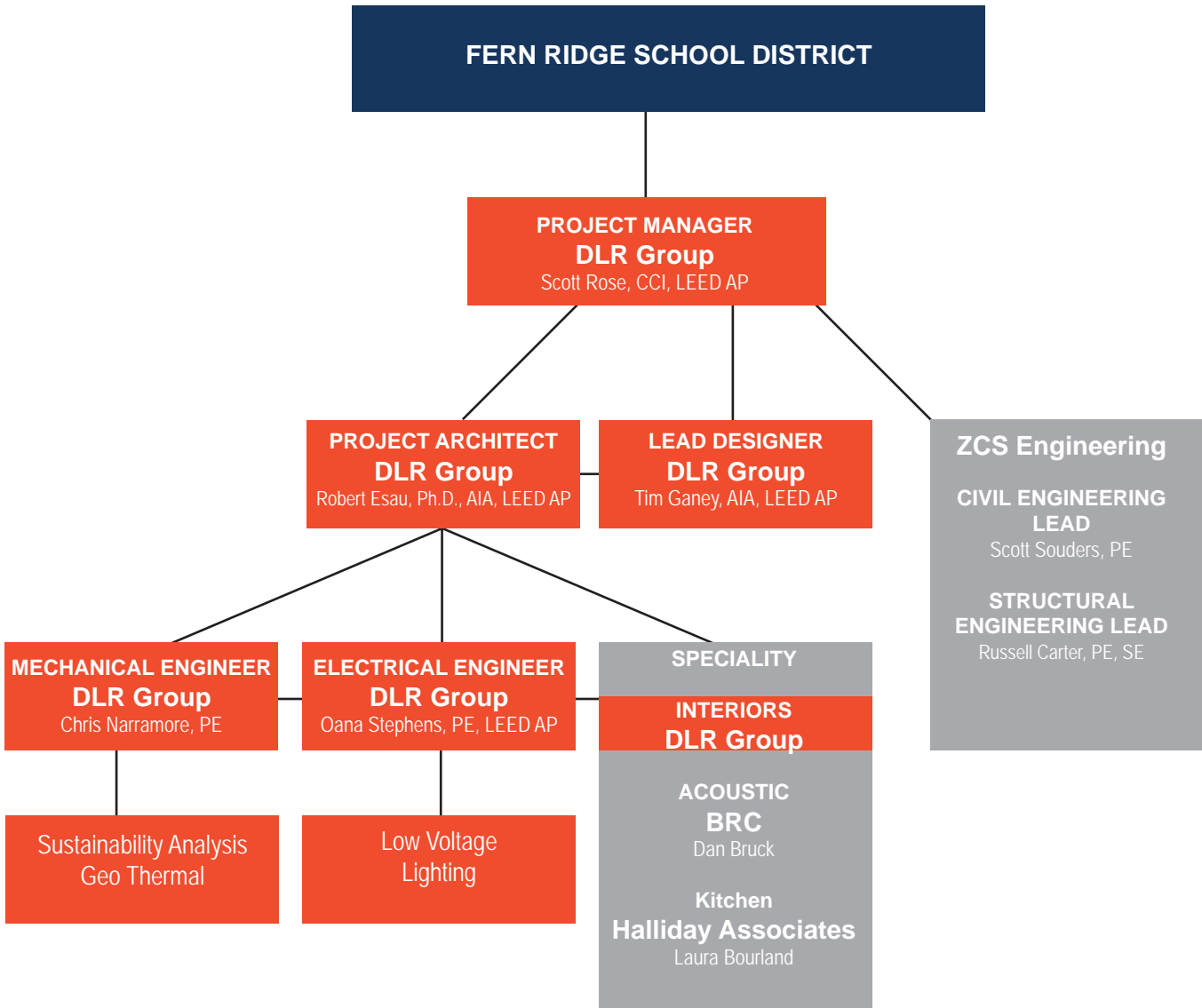


FERN RIDGE PROJECT TEAM

TEAM ORGANIZATION & RESUMES



***DLR Group engineering suggestions above can be modified to be any other District-preferred engineer.**

Sub-Consultant Information

ZCS Engineering, Inc. was founded by Richard Zbinden in 1978 in Klamath Falls, Oregon as Zbinden Engineering. Dick was an engineering professor at Oregon Institute of Technology at that time. One of his goals with Zbinden Engineering was to be able to provide students with jobs and real world engineering experience while they were still attending school.

Russ Carter, a graduate of Oregon Institute of Technology, joined Dick at Zbinden Engineering in 1989. In 2001, he and Dick formed Zbinden Carter Engineering, Inc. Scott Souders, also a graduate of Oregon Institute of Technology, joined the team in 1996. Scott became an owner in 2005 and the business name changed again, this time to ZCS Engineering, Inc. (Zbinden Carter Souders.) While the company has grown considerably over the years, the owners still value its roots and traditions and continue to provide internships and real world experience for engineering students.

ZCS provides civil, structural and geotechnical engineering, as well as construction engineering support for their clients throughout the Pacific Northwest. The firm has been the engineer of record for the design of many commercial buildings, bridges, dams, retaining walls, foundations, drainage systems, and general planning projects involving government agencies, municipalities, businesses, and private individuals.

It is their goal at ZCS to foster an environment that promotes continuous learning and job enrichment, where ZCS values relationships with their clients, and encourage community involvement.

ZCS Engineering, Inc. has been expanding their business to additional locations in Oregon. Their office locations now include Klamath Falls, Bend, Portland, and Grants Pass. They hold professional engineering registrations in Oregon, Washington, California, Idaho, Colorado, Montana, Ohio and Louisiana.

SCOTT M. ROSE

CCI, LEED AP

PROJECT MANAGER

DLR GROUP

Scott brings 26 years of project management experience to Fern Ridge School District and almost as many years of service as a construction administrator. His career began working as a project manager for school districts, which gives him special insight into what a District wants from its architectural firm. His construction administration background means he'll be a forceful, on-site advocate for the District during construction and someone who will demand the project is built on time and on budget.

Scott is the best choice for a District that wants a project manager who will demand excellence and push the project forward using proven best practices in project management for integrated design and project delivery. Scott's vast experience and acute understanding of the K-12 design and construction market will drive the team's focus on design excellence and cost effectiveness.



Title: Principal
Experience: 26 years
Education: Bachelor of Science, Architecture, Portland State University
Registration: Certified Construction Contract Administrator; LEED Accredited Professional
Professional Affiliations: Member, Construction Specifications Institute

Ashland High School Addition & Renovation; Ashland, Ore.
Banks High School Renovation; Banks, Ore.
Cascade High School Addition, Turner, Ore.
Central School District High School Addition & ADA Improvements; Independence, Ore.
Foss High School Addition & Renovation; Tacoma, Wash.
Hood River High School Addition & Renovation; Hood River, Ore.
Mountain View High School Addition & Renovation, Bend, Ore.
Nestucca Valley High School Addition & Renovation; Hebo, Ore.
Scappoose High School Addition & Renovation; Scappoose, Ore.
Scio High School Science Lab Addition; Scio, Ore.
Dallas School District Bond Projects; Dallas, Ore.
Aumsville Elementary; Turner, Ore.

Bellview Elementary School, Ashland, Ore.
Conger Elementary School Addition; Klamath Falls, Ore.
Grandhaven Elementary School; McMinnville, Ore.
Grant Watts Elementary School; Scappoose, Ore.
Petersen Elementary School; Scappoose, Ore.
Warren Elementary School; Scappoose, Ore.
Marysville K-8 Rebuild; Portland, Ore.
Napavine K-8 Addition & Renovation; Napavine, Wash.
Banks Middle School Addition & Renovation; Banks, Ore.
Helman Middle School Addition; Ashland, Ore.
North Marion Middle School Envelope Repairs; Aurora, Ore.
Westridge Middle School Addition; Oakridge, Ore.
Rockwood School; Gresham, Ore.

TIM GANEY

AIA, LEED AP

LEAD DESIGNER

DLR GROUP

Tim is a renowned designer with focused expertise in K-12 school projects, as well as expanded experience in other building types including: higher education, libraries, student-housing, workplace, and healthcare facilities. He began his professional career in 1995 on domestic and international projects delivering architectural planning, project design, project management, and construction administration services. His environmentally sensitive solutions focus on design strategies which are relevant, enduring, and inspirational. He has an extensive resume of award-winning projects including a Presidential Award for Design Excellence and has been published in Architectural Review and Architectural Record. He has lived and worked in Edinburgh, Scotland, Kansas City, Phoenix, and Portland.

Tim's recent work includes working with Joplin School District on a new 475,000 SF high school to replace the facility demolished by a devastating 2011 tornado. This 21st Century school provides students with a "career to college" experience supported by new technologies and educational practices. He collaborated with North Little Rock School District to design a 9-12 grade campus to replace outdated school facilities. This space enables personalized education for students with strong connections to technology, career pathways, and S.T.E.M. learning.



Title: Associate
Experience: 18 years
Education: Bachelor of Architecture, University of Kansas,
Degree in Architecture, Edinburgh College of Art & Architecture
Registration: Architect: OR, MO; LEED Accredited Professional
Professional Affiliations: Member, American Institute of Architects (AIA);
Member, Council of Educational Facility Planners International (CEFPI)

Circle USD New High School; Towanda, Kan.

Joplin New High School; Joplin, Mo.

North Little Rock New High School & Elementary School; North Little Rock, Ark.

Forest Grove High School Gymnasium & Classroom Addition; Forest Grove, Ore.*

Helen Baller Elementary School, Camas, Wash.*

Joseph Gale Elementary; Forest Grove, Ore.*

Rosedale Elementary School; Hillsboro, Ore.*

St. Peter's Catholic School, K-8 Addition & Renovation, Kansas City, Mo.*

Thurston K-5 Prototype Elementary; Springfield, Ore.*

Visitation Catholic School K-8 Addition & Renovation; Kansas City, Mo.*

Rockwood School; Gresham, Ore.

Waipahu Intermediate "DREAMS" School; Waipahu, Hawaii

Beaverton K-8 School, Beaverton, Ore.*

Blue Valley Middle School; Overland Park, Kan.*

Catlin Gabel Middle and Upper Independent School Arts Building; Portland, Ore.*

Mt. Hood Community College, Early Childhood Center; Portland, Ore.*

**while with another firm*

ROBERT ESAU

PH.D., AIA, LEED AP

PROJECT ARCHITECT

DLR GROUP

Born and raised in New Zealand, Robert is an expert in historical preservation and approaches his work with the belief that buildings should be created in direct response to occupant needs. Clients who work with Robert appreciate his patience, attention to detail, and sensitivity to the social, cultural, and physical contexts of a project.

Robert's work is elevated by genuine passion for architectural history and historic preservation. His background includes substantial education in fine arts and art history, culminating in a Ph.D in Art History from Bryn Mawr College. He has worked on diverse historic projects, including façade preservation, architectural restoration, and interior modernizations completed within preservation requirements.

Robert's projects include the Wayne L. Morse United States Courthouse in Eugene, working with Portland Public Schools to rebuild and maintain the beloved historical qualities of Marysville K-8 School after a fire destroyed portions of the building, and the design of PK Park, a new 3,000 seat baseball stadium for the University of Oregon.



Title: Senior Associate

Experience: 15 years

Education: Master of Architecture, University of Oregon; Ph.D., Art History, Bryn Mawr College; Master of Arts, Art History, University of Canterbury; Bachelor of Arts, Art History - Honours, University of Canterbury

Registration: Architect: OR, WA; LEED Accredited Professional

Professional Affiliations: American Institute of Architects, U.S. Green Building Council

Ashland High School; Ashland, Ore.

Foss High School Addition & Renovation; Tacoma, Wash.

Lincoln High School Addition & Modernization, Tacoma, Wash.

South High School; Cheyenne, Wyo.

Whitefish High School; Whitefish, Mont.

Nestucca Valley School District - New High School & Elementary School Additions & Renovations; Cloverdale, Ore.

A.G. Bell Elementary School; Kirkland, Wash.

Bellview Elementary School; Ashland, Ore.

North Bend School District, Elementary Renovation; North Bend, Ore.

Watts Elementary Cafeteria Addition; Scappoose, Ore.

Marysville K-8 Rebuild; Portland, Ore.

Napavine K-8 School - LRFP, Addition & Remodel; Napavine, Wash.

Banks Middle School Addition & Renovation; Banks, Ore.

Clatskanie School District - Additions & Remodels; Clatskanie, Ore.

Dallas School District Boiler Room Upgrades; Dallas, Ore.

Hood River School District - LRFP, Additions & Remodels; Hood River, Ore.

La Grande School District - LRFP; La Grande, Ore.

Nestucca Valley School District - LRFP, Bond Assistance & Planning; Hebo, Ore.

Columbia Gorge Community College, Health Sciences Building; The Dalles, Ore.

Oregon State University, Gill Coliseum Renovation; Corvallis, Ore.

Oregon State University, Goss Stadium; Corvallis, Ore.

Oregon State University, Whyte Track & Field Center; Corvallis, Ore.

University of Oregon, Randy and Susie Papé Complex for Soccer & Lacrosse; Eugene, Ore.

KENT LARSON

AIA, LEED AP

QUALITY ASSURANCE LEADER

DLR GROUP

Kent is one of DLR Group's most skilled and experienced project leaders. He has built a reputation for attention to detail in constructability, and for his ability to work with contractor and consultant team members for efficient project delivery. Kent is passionate about the art and science of how buildings are put together. As a champion of integrated design and project delivery, Kent works with owner, client, designer, and contractor team members as design partners.

Kent was a key project manager for the Wayne. L. Morse United States Courthouse for the U.S. General Services Administration (GSA). DLR Group's integrated design and delivery of the Morse Courthouse was so efficient that the GSA made it a case study in how to carry out integrated approaches. He also worked with the Oregon Department of Corrections to design and build the multi-custody Coffee Creek Correctional Facility, and collaborated with the City of Happy Valley to design a new City Hall that provides the community with facilities balancing civic transparency, secure administration, and structural strength for emergency operations in the event of a disaster.



Title: Principal
Experience: 27 years
Education: Bachelor of Architecture, University of Minnesota
Registration: Architect: OR; LEED Accredited Professional
Professional Affiliations: American Institute of Architects

Ashland High School; Ashland, Ore.

Cascade High School; Turner, Ore.

Nestucca Valley High School; Cloverdale, Ore.

North Little Rock New High School; North Little Rock, Ark.

Scappoose High School Addition & Renovation; Scappoose, Ore.

Winneconne High School; Winneconne, Wis.

De Pere Middle School; De Pere, Wis.

Rosendale Intermediate School Addition; Rosendale, Wis.

Marysville K-8 School Rebuild; Portland, Ore.

Banks Middle School Addition & Renovation; Banks, Ore.

A.G. Bell Elementary School; Kirkland, Wash.

Aumsville Elementary School; Turner, Ore.

Ashland Bellview Elementary School; Ashland, Ore.

Ashland Helman Elementary School; Ashland, Ore.

Ashland Walker Elementary School; Ashland, Ore.

Clyde Hill Elementary School; Clyde Hill, Wash.

Conger Elementary School Addition; Klamath Falls, Ore.

Grant Watts Elementary School; Scappoose, Ore.

Hortonville Elementary School; Hortonville, Wis.

Petersen Elementary School; Scappoose, Ore.

Turner Elementary School Addition; Turner, Ore.

Valhalla Elementary School; Federal Way, Wash.

Warren Elementary School; Scappoose, Ore.

CHRIS NARRAMORE

PE

MECHANICAL ENGINEER

DLR GROUP

Chris is a mechanical engineer respected for his rigorous design thinking, attention to detail, skills as a project manager, and his attentiveness and responsiveness in construction administration. As a champion of integrated design, he approaches working with teams with the belief that everyone should be at the design table, each with an equal voice in creating the best ideas to fulfill the project goals. Chris has designed mechanical, HVAC, and plumbing solutions for diverse clients, including workplace, corrections/detention, higher education and K-12 education projects.

His recent experience includes working with the Scappoose School District in Oregon and its stakeholders to complete the LEED Gold Petersen Elementary School. The design uses exposed HVAC and plumbing systems as a building-as-a-learning-tool program and features passive design strategies, on-site photovoltaics with high-efficiency systems to achieve significant energy savings. Chris also was a key team member of the AIA award-winning Federal Way Schools Program, and is part of the integrated design team for the new Google campus in Kirkland, Washington.



Title: Senior Associate

Experience: 27 years

Education: Bachelor of Science, University of Arkansas

Registration: Mechanical Engineer: OR, WA, CA, AR, HI, OK

Professional Affiliations: American Society of Heating, Refrigerating and Air (ASHRAE)

Banks High School Renovation; Banks, Ore.

Marysville Getchell High School Campus; Marysville, Wash.

Scappoose High School Addition & Renovation; Scappoose, Ore.

Steilacoom High School Renovation & Addition; Steilacoom, Wash.

Tahoma High School & Regional Learning Center; Maple Valley, Wash.

Whitefish High School; Whitefish, Mont.

Fayetteville High School Addition & Renovation; Fayetteville, Ark.

Conway School (K-8); Mount Vernon, Wash.

Marysville K-8 School Rebuild; Portland, Ore.

A.G. Bell Elementary School; Kirkland, Wash.

FWPS Elementary Schools (Panther Lake, Valhalla, Lakeland & Sunnycrest); Federal Way, Wash.

Grant Watts Elementary School; Scappoose, Ore.

Petersen Elementary School; Scappoose, Ore.

Warren Elementary School; Scappoose, Ore.

Banks Middle School Addition/Remodel; Banks, Ore.

OANA STEPHENS

PE, LEED AP

ELECTRICAL ENGINEER

DLR GROUP

Oana has extensive experience in performing power distribution, lighting, special systems design and hookup of HVAC for workplace and industrial facilities, educational centers and institutional buildings. She is experienced in providing engineering calculations, code reviews, lighting design (including lighting energy budget calculations), cost estimating, preparing electrical specifications, shop drawing review and construction administration.



Title: Associate

Experience: 12 years

Education: Bachelor of Science in Electrical Engineering, Polytechnic University - Bucharest

Registration: Electrical Engineer: OR, WA; NCEES

Professional Affiliations: Institute of Electrical and Electronics Engineers, LEED Accredited Professional

Banks High School Renovation; Banks, Ore.

Hazen High School Addition & Renovation; Renton, Wash.

Scappoose High School Addition & Renovation; Scappoose, Ore.

Steilacoom High School Addition & Renovation; Steilacoom, Wash.

Tahoma High School & Regional Learning Center; Maple Valley, Wash.

Banks Middle School Addition & Renovation; Banks, Ore.

Pioneer Middle School; DuPont, Wash.

Scappoose Middle School Renovations; Scappoose, Ore.

Marysville K-8 School Rebuild; Portland, Ore.

Conway School (K-8); Mount Vernon, Wash.

A.G. Bell Elementary School; Kirkland, Wash.

Grant Watts Elementary School, Petersen Elementary School, and Warren Elementary School; Scappoose, Ore.

Lakeland & Sunnycrest Elementary Schools; Federal Way, Wash.

Oakview Elementary School Reconstruction / Kitchen + Cafeteria; Centralia, Wash.

Piper Elementary School; Kansas City, Kan.

District-wide Critical Maintenance and Life Safety Upgrades, Scappoose, Ore.

Dallas School District-wide Maintenance Projects, Dallas, Ore.

AMARPREET SETHI

CEM, BEMP, HBDP, LEED AP

SUSTAINABILITY ANALYST

DLR GROUP

Amarpreet has been doing energy modeling for over 10 years. Her passion is to deliver Building Simulation services that provide value to architects and owners' sustainability goals through integrated design. She uses building simulation to help designers quantify energy savings and understand the interactions of building design with the mechanical systems and with the environment. Having focused on sustainable design during her undergraduate studies in India, Amarpreet felt the need to quantify the savings from the passive features, and thus pursued a Masters in Energy and Climate. To further her interest in daylighting, her Master's thesis focused on the study of the use of light shelves as features to improve daylighting.

She specializes in sustainability consulting, offering services including early-on concept assessments, energy modeling, daylighting analysis, natural ventilation modeling, thermal comfort analysis, Life Cycle Analysis and LEED compliance modeling. She is well-versed in multiple modeling simulation tools including eQUEST (DOE2), IES Virtual Environment, Energy Plus, Radiance (daylight modeling), and BLCC5 (Life Cycle Analysis). With this diverse knowledge of a number of modeling tools, Amarpreet is able to choose the right tool for each project, making sure it aligns with the mechanical design and the team's goals.



Title: Associate

Experience: 13 years

Education: Masters Degree in Building Design, Arizona State University; Bachelors in Architecture, T.V.B. School of Habitat Studies

License/Registration: Certified Energy Manager, LEED Accredited Professional

Professional Affiliations: Association of Energy Engineers, American Society of Heating, Refrigeration, and Air Conditioning Engineers

Tahoma High School; Maple Valley, Wash.

Whitefish High School; Whitefish, Mont.

Aliquippa High School and Elementary; Aliquippa, Pa.*

Conway School (K-8); Mount Vernon, Wash.

Valley View Middle School; Snohomish, Wash.*

McCarver Elementary School; Tacoma, Wash.

Mobile Elementary School; Mesa, Ariz.*

Thomas Jefferson, Roosevelt, Upton, Glenbrook; Euclid School District, Euclid, Ohio*

Sacred Heart SSLC; San Francisco, Calif.*

Google Campus; Kirkland, Wash.

Everett Municipal Court; Everett, Wash.

**while with another firm*

SCOTT SOUDERS

PE

CIVIL ENGINEERING LEAD

ZCS ENGINEERING

In 1997, Scott graduated from the Oregon Institute of Technology with a Bachelor of Science Degree in Civil Engineering Technology. From June 1992 to December 1993, he took time away from college to gain experience in the construction industry where he worked as a carpenter for a large commercial contractor. During this time, he gained knowledge and experience in the construction industry that has served him well in his engineering profession.

During his employment at ZCS Engineering, Scott has been involved in a wide variety of project development in both the civil and structural fields of engineering. He has helped develop a powerful consulting team that provides planning, engineering, and construction management services to architects, building contractors, developers, and municipalities. Scott continually strives to develop and maintain open lines of communication between permitting agencies, contractors, consultants, and owners on all of ZCS Engineering's projects. This philosophy has continually proven to be very beneficial to the firm's success.



Title: Corporate General Manager

Experience: 18 years

Education: Bachelor of Science in Civil Engineering Technology, Oregon Institute of Technology

Registration: Civil Engineer: OR, WA, CA

Professional Affiliations: American Society of Civil Engineers

Klamath Falls City Schools (KFCS) – Klamath Union Modoc Field Improvements; Klamath Falls, Ore.

KFCS Klamath Union High School Roof Replacement Projects; Klamath Falls, Ore.

KFCS Ponderosa 6th Grade Expansion; Klamath Falls, Ore.

KFCS Conger Elementary Basement Alterations; Klamath Falls, Ore.

KFCS Conger Elementary Cafeteria (KFCS and DLR Group); Klamath Falls, Ore.

KFCS District Renovations; Klamath Falls, Ore.

Ashland High School Gymnasium (with DLR Group); Ashland, Ore.

Ashland Bellview Elementary School (with DLR Group); Ashland, Ore.

Ashland Walker Elementary School (with DLR Group); Ashland, Ore.

Ashland Helman Elementary School (with DLR Group); Ashland, Ore.

SOU North Campus Village (with SERA Architects); Ashland, Ore.

Mount Angel School District (MASD) Kennedy High School Improvements (with BLRB Architects); Mt Angel, Ore.

MASD Middle School Improvements (with BLRB Architects); Mt Angel, Ore.

MASD St. Mary's Elementary Improvements (with BLRB Architects); Mt Angel, Ore.

White City Elementary Parking Lot; White City, Ore.

RUSSELL CARTER

PE, SE

STRUCTURAL ENGINEERING LEAD

ZCS ENGINEERING



Russ is one of the original employees of ZCS Engineering, Inc., then Zbinden Engineering. He began work in 1989 as an engineering technician while attending Oregon Institute of Technology (OIT). Russ became a Professional Engineer in 1995 and a Structural Engineer in 2001. In 2001, Russ became President and CEO of Zbinden • Carter • Souders Engineering, Inc. (ZCS). His engineering background is diverse and includes practical experience in structural and civil engineering, with specialized expertise in bridge and highway construction techniques.

In addition to his consulting and management duties at ZCS, Russ is active in the local educational community. Russ is a member of OIT's Industrial Advisory Committee and the Oregon Tech Foundation Board of Directors. He was awarded the 2011 Oregon Institute of Technology Distinguished Alumnus Award for assisting OIT's Civil Engineering Department with the renovation of the Senior Project curriculum format. Russ is also a charter member of the Citizens for Safe Schools career mentoring program and donates his time regularly on behalf of local students who have an interest in the industry.

Title: President

Experience: 25 years

Education: Bachelor of Science in Civil Engineering Technology, Oregon Institute of Technology

License/Registration: Structural Engineer: OR. Civil Engineer: OR, WA, CO, NC

Klamath Falls City Schools, Mills Elementary School Auditorium Seismic Retrofit & Building Renovation; Klamath Falls, Ore.

Klamath County Fire District #1, Station 6, Seismic Retrofit & Building Renovation; Klamath Falls, Ore.

Klamath County Fire District #1, New Fire Station #5; Klamath Falls, Ore.

Ashland School District Seismic Retrofit & Building Renovations; Ashland, Ore.

Rogue River School District #35, Rogue River Elementary School Seismic Rehabilitation Study and Seismic Retrofit; Rogue River, Ore.

Three Rivers School District, Applegate Elementary School Seismic Retrofit; Applegate, Ore.

Lakeview Schools Seismic Retrofit & Building Renovations – Fremont Elementary and Lakeview High School; Lakeview, Ore.

SOU, Churchill Hall Seismic Retrofit & Building Renovation; Ashland, Ore.

Medford City Hall Structural Retrofit & Building Renovation; Medford, Ore.

City of Garibaldi, Garibaldi Fire Station Seismic Retrofit; Garibaldi, Ore.

Grants Pass Fire Rescue, Hillcrest Fire Station Seismic Retrofit; Grants Pass, Ore.

City of Langlois, Langlois Fire Station Seismic Retrofit; Langlois, Ore.

Coos Bay City Hall/Police Station Seismic Retrofit & Building Renovation; Coos Bay, Ore.

LAURA BOURLAND
FCSI
KITCHEN DESIGNER
HALLIDAY ASSOCIATES, INC

Laura joined Halliday Associates in 1983 and has since accumulated an extensive amount of experience in the design of Food Service and Laundry facilities.

As project manager for the past 15 years her responsibilities include all stages of the design and construction process. Laura has completed various food service training courses which include ventilation, scullery design/application, advanced steam technology, modular serving systems, instruction in food production and food services, with topics ranging from menu/equipment relationships, cooking and baking techniques, methodology and the application of equipment, practical training in the use of smallwares, dining room operations, lighting and table-side preparation.



HALLIDAY
ASSOCIATES



Title: Vice President

Experience: 30 years

Education: Bachelor of Business and Math, Clark College

Professional Affiliations: Professional Member, Food Service Consultants Society International (FCSI)

Petersen Elementary School; Scappoose, Ore.

Marble Rush Middle School; Newberg, Ore.

Rock Creek Middle School; Clackamas, Ore.

Alder Creek Middle School; Clackamas, Ore.

Rowe Middle School; Clackamas, Ore.

Sunrise Middle School; Clackamas, Ore.

Sisters of St. Mary Middle School; Beaverton, Ore.

Vernonia Middle School; Vernonia, Ore.

Liberty Middle School; Camas, Wash.

Chinook Middle School; Bellevue, Wash.

Covington Middle School; Vancouver, Wash.

Ridgeline Middle School; Yelm, Wash.

Sandy High School; Oregon Trail SD, Ore.

Harrison Prep; Lakewood, Wash.

Woodland High School; Woodland, Wash.

Bend Senior High School Expansion-Central Kitchen; Bend, Ore.

Union High School; Vancouver, Wash.

Eatonville High School; Eatonville, Wash.

Washington School For the Deaf; Vancouver, Wash.

Gladstone High School; Gladstone, Ore.

Hayes Freedom High School; Camas, Wash.

West Linn High School; Lake Oswego, Ore.

Silverton High School; Silverton, Ore.

Stevenson High School; Stevenson, Wash.

Capital Center Alternative High School; Beaverton, Ore.

White Pass High School; Randle, Wash.

Ridgefield High School; Ridgefield, Wash.

De La Salle North Catholic High School; Portland, Ore.

Shoreline Central District Kitchen; Shoreline, Wash.

Camas High School Expansion; Camas, Wash.