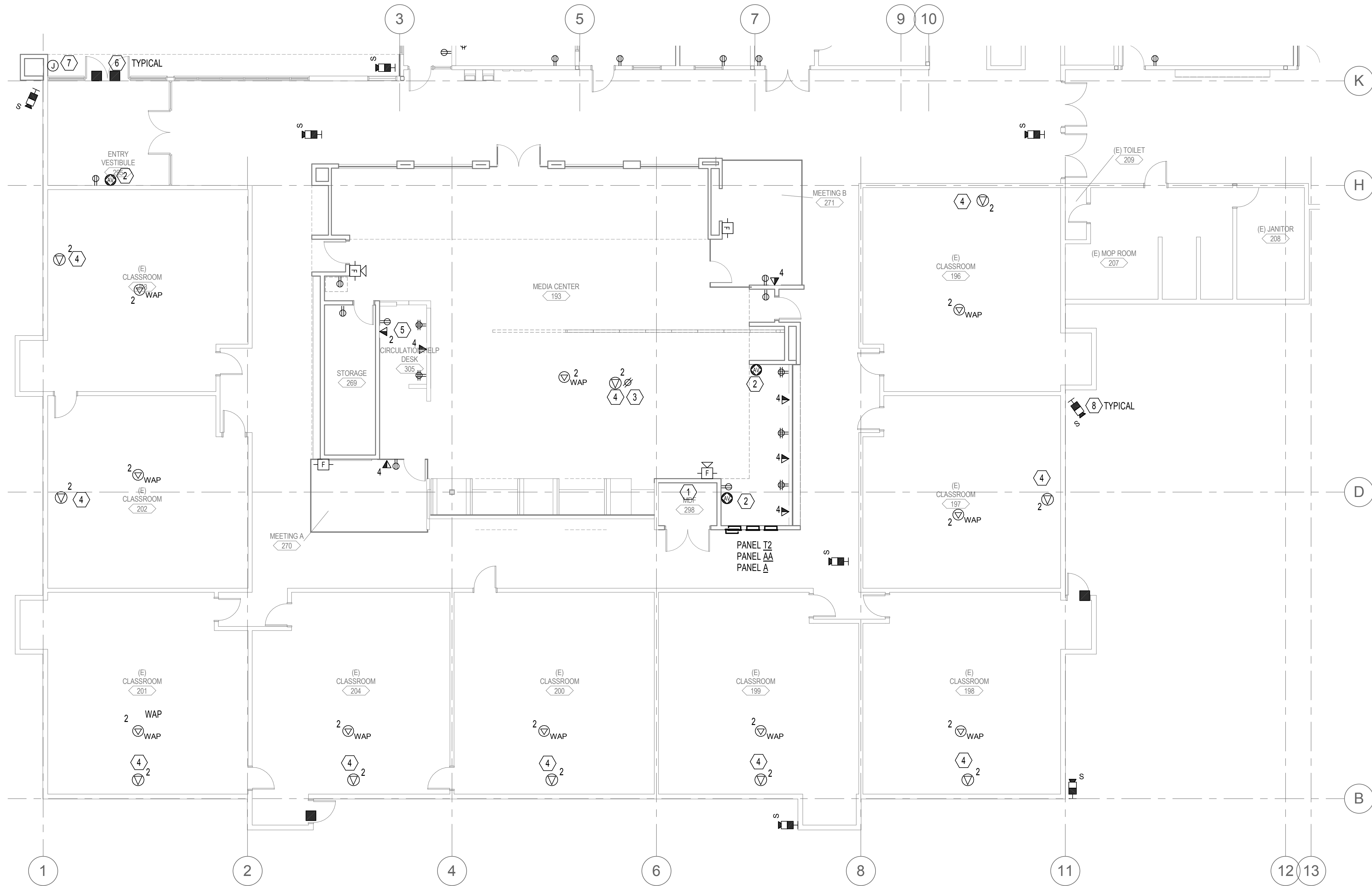
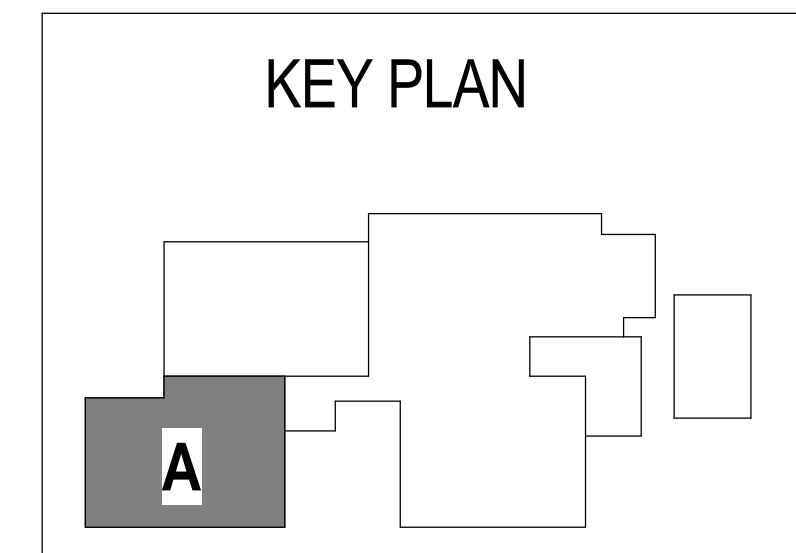


C:\revit\Local Files\14-1801 MEP\15\14-1801 MEP\15_mike.steeb.rvt
5/13/2015 4:37:45 PM



1 FLOOR PLAN - AREA A - POWER AND SIGNAL
1/8" = 1'-0"

- GENERAL NOTES:**
- A. TERMINATE DATA CABLES SHOWN ON NEW PATCH PANELS IN EXISTING MDF 298.
 - B. MEDIA CENTER 193/ENTRY 295: PROVIDE 20A CIRCUIT PER (6) DUPLEX RECEPTACLES AND DEDICATED CIRCUITS AS NOTED IN BELOW NOTES FROM EXISTING SPARE BREAKERS IN PANEL T2.
 - C. SUPPORT DATA CABLING VIA J-HOOKS ABOVE ACCESSIBLE CEILING.
- NOTES:**
1. PROVIDE THE FOLLOWING BACKBONE FROM MDF 298 TO NEW IDF: 12 STRAND MULTI-MODE, 6 STRAND SINGLE-MODE AND (10) CAT6 CABLES.
 2. PROVIDE 2-GANG JUNCTION BOX WITH 1-1/4" CONDUIT TO ACCESSIBLE CEILING SPACE FOR FUTURE AV CABLING.
 3. PROJECTOR. PROVIDE DEDICATED CIRCUIT.
 4. PROVIDE (2) CAT6 CABLES FOR FUTURE PAGING AND/OR AV USE. PROVIDE 20' SLACK CABLE ABOVE CEILING AT LOCATION SHOWN.
 5. PRINTER. PROVIDE DEDICATED CIRCUIT.
 6. FUTURE DOOR CONTACT. PROVIDE UNSHIELDED TWISTED PAIR FROM CONTACT TO MDF 298 FOR FUTURE CONNECTION TO ACCESS CONTROL SYSTEM. PROVIDE 10' SLACK CABLE IN ACCESSIBLE CEILING SPACE AT CONTACT LOCATION AND 20' OF SLACK CABLE IN 298.
 7. PROVIDE 2-GANG BELL BOX FOR FUTURE CARD READER. PROVIDE 1" GRC FROM BOX TO NEAREST ACCESSIBLE CEILING SPACE.
 8. PROVIDE (1) CAT6 CABLE FROM CAMERA LOCATION TO MDF 298. PROVIDE SINGLE GANG BELL BOX FOR EXTERIOR LOCATIONS. MOUNTING HEIGHT TO BE DETERMINED. ROUTE 1" CONDUIT FROM BOX TO NEAREST ACCESSIBLE CEILING SPACE FOR CABLING. CAMERA AND ASSOCIATED MOUNTING BRACKET TO BE PART OF SEPARATE BID PACKAGE.



Project Status
PERMIT/BID ISSUE

REGISTERED PROFESSIONAL
MICHAEL FORREST
EXPIRES 7/18

FLOOR PLAN - AREA A - POWER AND SIGNAL
FERN RIDGE MIDDLE SCHOOL
INTERIOR ALTERATIONS

E3.1
7-14-15 7:30
Issue Date 04-29-2015
REVISIONS
ADD-A 05.13.2015 Adheman A

PAE

DLR Group
Architecture Planning Interiors

© 2015, DLR Group Architecture & Planning Inc., an Oregon corporation. ALL RIGHTS RESERVED.