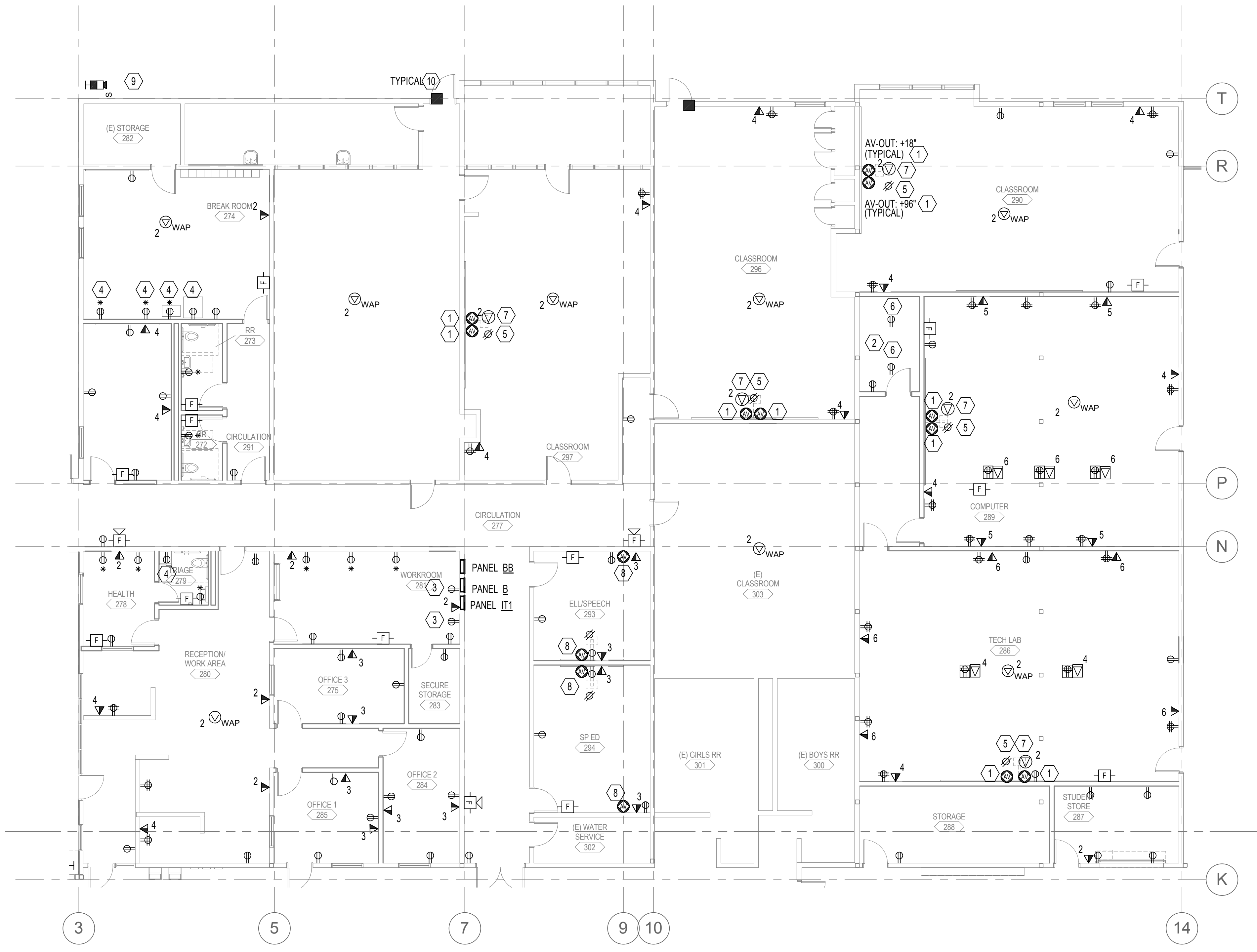


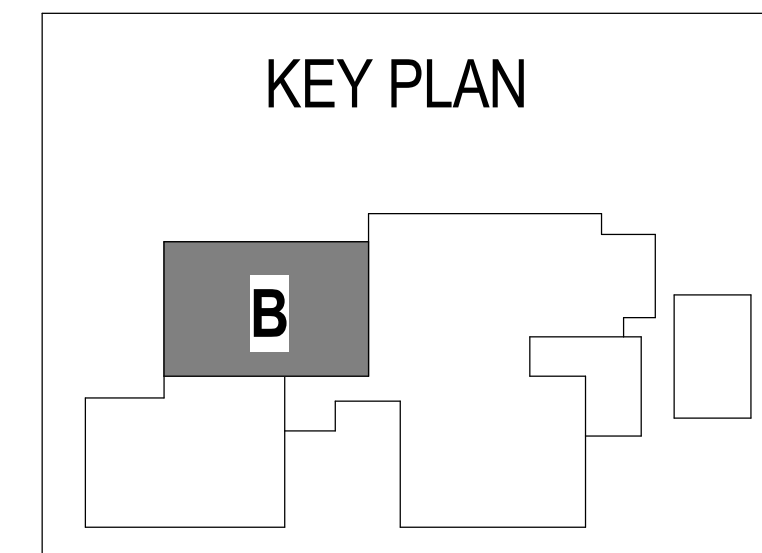
C:\revit\Local Files\14-1801 MEP\15\14-1801 MEP\15\_mike.steeb.rvt  
5/13/2015 4:39:42 PM

1 FLOOR PLAN - AREA B - POWER AND SIGNAL  
1/8" = 1'-0"



- GENERAL NOTES:**
- A. TERMINATE DATA CABLES SHOWN ON NEW PATCH PANELS IN NEW IDF.
  - B. PROVIDE 20A CIRCUIT PER (6) DUPLEX RECEPTACLES AND DEDICATED CIRCUITS AS NOTED IN BELOW NOTES FROM EXISTING SPARE BREAKERS IN PANEL T1.
  - C. SUPPORT DATA CABLING VIA J-HOOKS ABOVE ACCESSIBLE CEILING.

- NOTES:**
- 1. 2. PROVIDE 2-GANG JUNCTION BOX AT EACH AV LOCATION. CONNECT TOGETHER VIA 1-1/2" CONDUIT. EXTEND 1-1/2" INTO ACCESSIBLE CEILING SPACE FROM TOP BOX.
  - 2. PROVIDE (2) FLOOR MOUNTED RACKS AND 10' OF LADDER RACK.
  - 3. COPIER: PROVIDE DEDICATED CIRCUIT.
  - 4. APPLIANCE: PROVIDE DEDICATED CIRCUIT.
  - 5. PROJECTOR: PROVIDE DEDICATED CIRCUIT.
  - 6. IT EQUIPMENT: PROVIDE DEDICATED CIRCUIT.
  - 7. 4. PROVIDE (2) CAT6 CABLES FOR FUTURE PAGING AND/OR AV USE. PROVIDE 20' SLACK CABLE ABOVE CEILING AT LOCATION SHOWN.
  - 8. PROVIDE 2-GANG JUNCTION BOX WITH 1-1/4" CONDUIT TO ACCESSIBLE CEILING SPACE FOR FUTURE AV CABLING.
  - 9. PROVIDE (1) CAT6 CABLE FROM CAMERA LOCATION TO MDF 298. PROVIDE SINGLE GANG BELL BOX FOR EXTERIOR LOCATIONS. MOUNTING HEIGHT TO BE DETERMINED. ROUTE 1" CONDUIT FROM BOX TO NEAREST ACCESSIBLE CEILING SPACE FOR CABLING. CAMERA AND ASSOCIATED MOUNTING BRACKET TO BE PART OF SEPARATE BID PACKAGE.
  - 10. FUTURE DOOR CONTACT. PROVIDE UNSHIELDED TWISTED PAIR FROM CONTACT TO NEW IDF FOR FUTURE CONNECTION TO ACCESS CONTROL SYSTEM. PROVIDE 10' SLACK CABLE IN ACCESSIBLE CEILING SPACE AT CONTACT LOCATION AND 20' OF SLACK CABLE IN IDF.



Project Status  
PERMIT/BID ISSUE

FLOOR PLAN - AREA B - POWER AND SIGNAL  
FERN RIDGE MIDDLE SCHOOL  
INTERIOR ALTERATIONS

E3.2  
Issue Date: 04/29/2015  
REVISIONS  
ADDN. 05.13.2015 Adendum A



**DLR Group**  
Architecture Planning Interiors

© 2015, DLR Group Architecture & Planning Inc., an Oregon corporation. ALL RIGHTS RESERVED.